

APP CRS 179°	Rwy Idg TDZE Apt Elev	5000 1316 1321
------------------------	-----------------------------	---

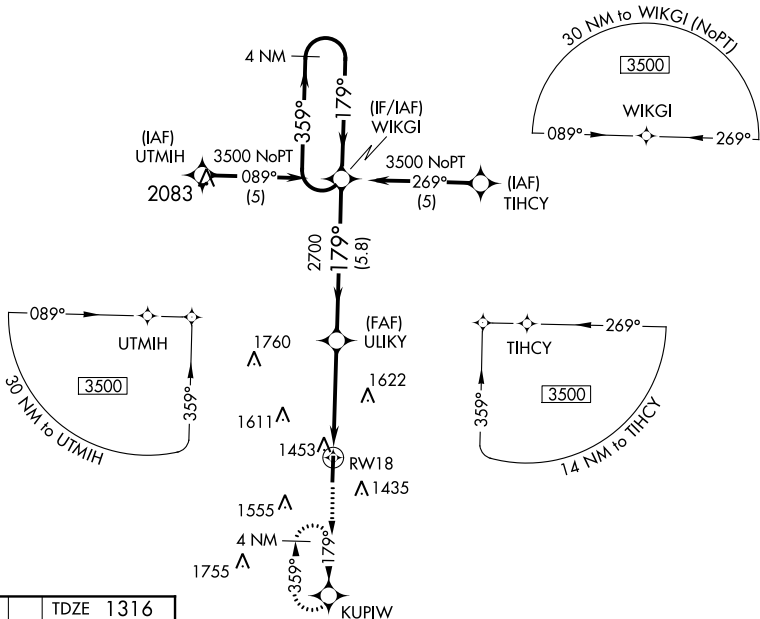
RNAV (GPS) RWY 18

FLOYD W JONES LEBANON (LBO)

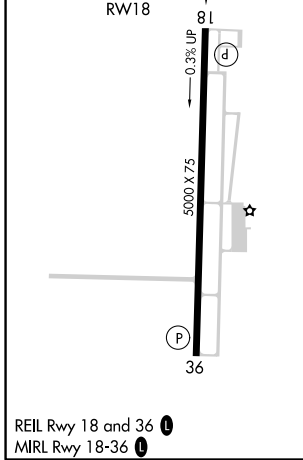
▼ When local altimeter setting not received, use Springfield-Branson National altimeter setting and increase all DA/MDA 120 feet.
 ▲ NA Baro-VNAV NA when using Springfield-Branson National altimeter setting. Baro-VNAV NA below -17° C (1° F). DME/DME RNP-0.3 NA.

MISSED APPROACH: Climb to 3500 direct KUPIW and hold.

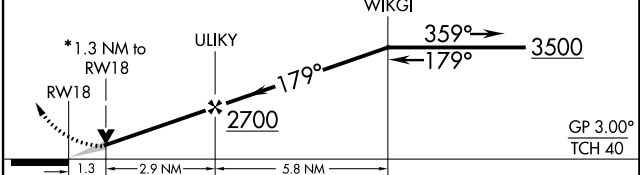
AWOS-3PT 118.975	SPRINGFIELD APP CON 121.1 290.5	CLNC DEL 123.725	UNICOM 122.8 (CTAF) 0
----------------------------	---	----------------------------	---------------------------------



ELEV 1321	TDZE 1316
-----------	-----------



3500 KUPIW VGSI and descent angles not coincident.
 * LNAV only, VDP NA when using Springfield-Branson National altimeter setting.



CATEGORY	A	B	C	D
GLS PA DA	NA			
LNAV/VNAV DA	1937-2 1/4		621 (700-2 1/4)	
LNAV MDA	1760-1	444 (500-1)	1760-1 1/4	444 (500-1 1/4)
CIRCLING	1820-1	499 (500-1)	1820-1 1/2	1980-2
			499 (500-1 1/2)	659 (700-2)

APP CRS 359°	Rwy Idg TDZE Apt Elev	5000 1321 1321
------------------------	-----------------------------	---

RNAV (GPS) RWY 36

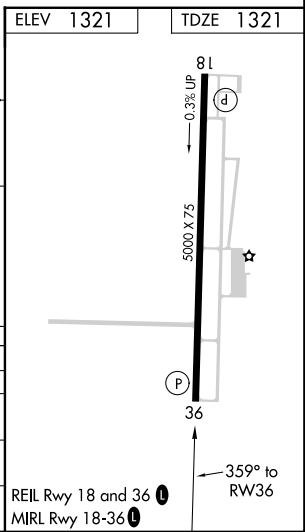
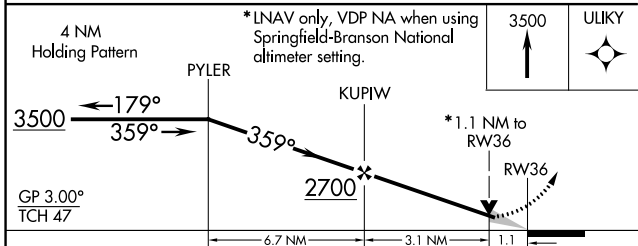
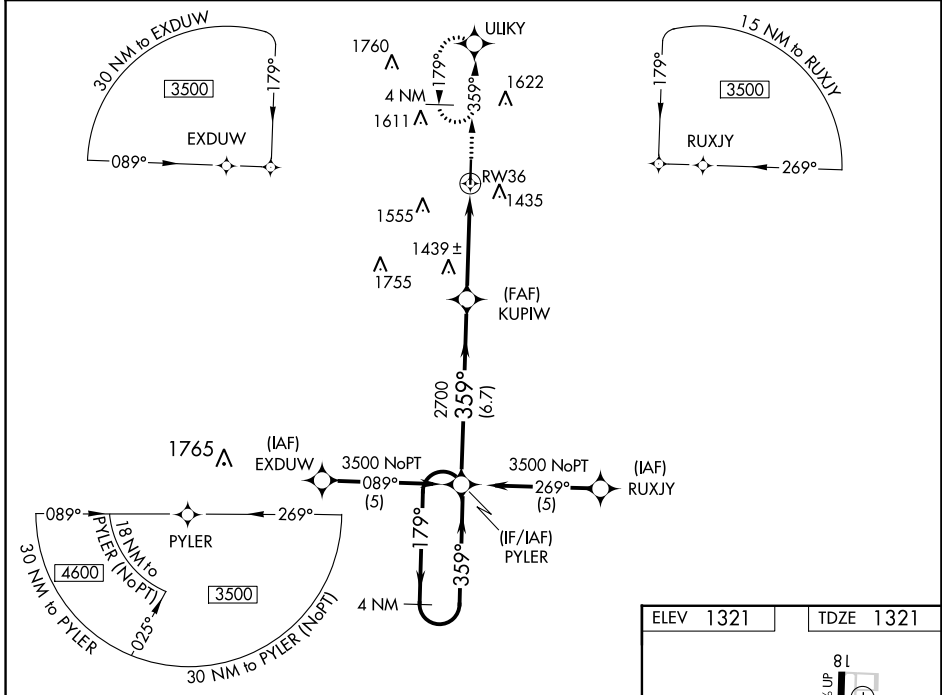
FLOYD W JONES LEBANON (LBO)

▽ When local altimeter setting not received, use Springfield-Branson National altimeter setting and increase all DA/MDA 120 feet.

▲ NA Baro-VNAV NA when using Springfield-Branson National altimeter setting. Baro-VNAV NA below -17° C (1° F). DME/DME RNP-0.3 NA.

MISSED APPROACH: Climb to 3500 direct ULIKY and hold.

AWOS-3PT 118.975	SPRINGFIELD APP CON 121.1 290.5	CLNC DEL 123.725	UNICOM 122.8 (CTAF) 0
----------------------------	---	----------------------------	---------------------------------



CATEGORY	A	B	C	D
GLS PA DA	NA			
LNAV/VNAV DA	1680-1¼ 359 (400-1¼)			
LNAV MDA	1700-1 379 (400-1)		1700-1¼ 379 (400-1¼)	
CIRCLING	1820-1 499 (500-1)	1820-1½ 499 (500-1½)	1980-2 659 (700-2)	

NC-3, 06 DEC 2018 to 03 JAN 2019

NC-3, 06 DEC 2018 to 03 JAN 2019